

Phoenix

Travel in first class



MIDI

Alcove | Liner

Pricelist 2022/2023

Standard highlights

STANDARD HIGHLIGHTS OF PHOENIX MIDI-CLASS

Modern furniture design with well-defined, straight lines and edges

Interplay of open, semitransparent and closed surfaces

Furniture decor in Erbachahorn

Ceiling canopies with integrated LED room light

LED-light concept with room- and individual light

Kitchen worktop in high quality and elegant granite solid surface

Bathroom with sophisticated mirror installation

Cushion design with ergonomic forms

Furniture fronts and doors with chrome handles

Recessed energy-saving LED spotlights

LED reading lights with individual switches

Matt chrome light switches and sockets

Masterly-manufactured furnitures in front frame construction with aluminium profiles

Electric ventilator above the kitchen with thermostat

Hot water central heating ALDE with convectors in living area, bathroom and intermediate floor, with integrated night setback

Electrical adjustable and heated rear-view mirrors

STANDARD HIGHLIGHTS OF THE MIDI-ALCOVES:

Strengthened stabilisers on front and rear axle (Daily)

Central locking for driver and passenger door with remote control

Comfort shock-cushioning-seats for driver and passenger with seat heating

STANDARD HIGHLIGHTS OF THE MIDI-LINERS:

Tinted panorama pane

Electrical powered blind on the panorama-front pane with PU isolation

Collateral tinted insulated glass sliding window (driver's cab)

Side windows in driver's cab with blinds

Rear axle liner with air suspension and function lift and lower



Images partly with optional equipment.

The unique assembly concept

STANDARD HIGHLIGHTS OF THE PHOENIX ASSEMBLING

Self-supporting, solid and anti-rotting sandwich-construction with PU-foam-isolation

Electronic controlled entrance-step tread with safety circuit

Homogenous and sturdy cabin, GRP-PU sandwich flooring, walls, roof and back made of Aluminium-PU-sandwich

Woodfree, sturdy comb false floor made of fibre-glass reinforced MonoPan

Large flaps for storage space and garage doors with 40 mm wall thickness and twice circular blanket

Lowered frame in reinforced version for vehicles with rear garage

Wide entrance door with window, with two point locking and remote control, false floor flaps, garage doors and entrance door with 1-key-system

TOP QUALITY AT THE PHOENIX BODYWORK

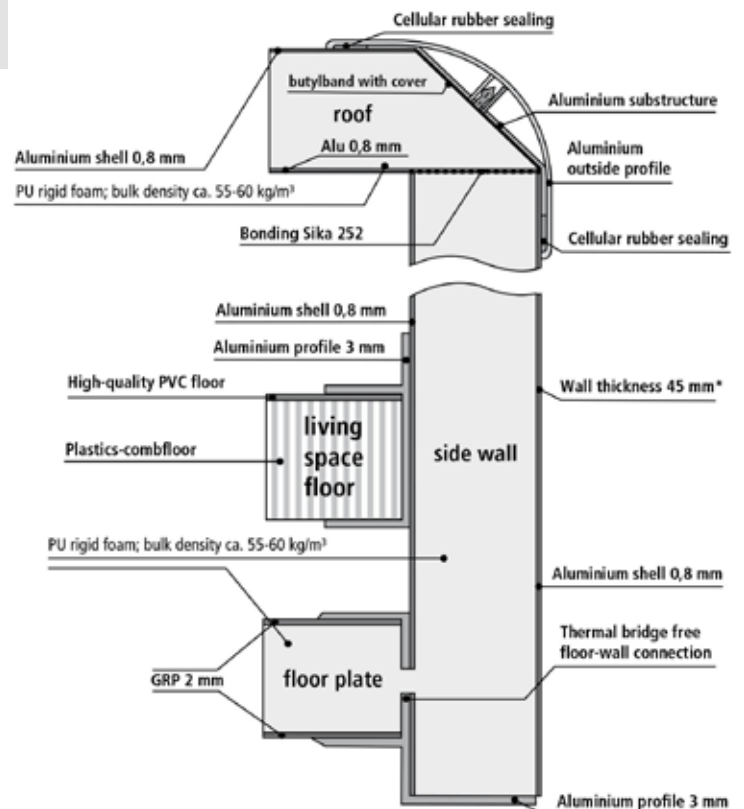
Construction from the outside to the inside, first the cabin, then the completion of the interior. This affords a considerably better maintainability and an optimal access to the components in case of repair.

Steadiness of a cube through the assembly of a 42 mm thick Alu-PU-Alu-back wall. Roof and back wall are cemented and rivetted with the side walls. This establishes the greatest possible safety for the passengers and a long-run density of the construction.

Homogenous and optimal insulation --> complete cabin with 40 mm PU-foam with best values of insulation

Back wall and wheel arches are made of the same insulating material as the side walls and the roof. Excellent insulation – doesn't heat up that much in summer and needs less heating energy in winter.

10 years density warranty on the assembly against external humidity entry with annual examination according to the Phoenix warranty conditions, except parts from suppliers as flaps, sockets, doors, windows, bonnets etc.



Images partly with optional equipment.

The new Midi-Alcove and Midi-Liner Iveco Daily 50 C 16

IVECO DAILY 50 C 16 EURO VI E

with 2,3 l 4 cylinder engine with 156 HP, max. torque 400 Nm

Midi-Alcove 6600 RSL

with wheelbase 4.100 mm, gross vehicle weight 5,2 t, optional 5,6 t / 5,8 t

Midi-Alcove 7200 RSLG and 7400 RSL

with wheelbase 4.350 mm, gross vehicle weight 5,2 t, optional 5,6 t / 5,8 t

Midi-Liner 7400 RSL and 7700 L

with wheelbase 4.100 mm, gross vehicle weight 5,2 t, optional 5,6 t / 5,8 t

Midi-Liner 7700 RSL

with wheelbase 4.350 mm, gross vehicle weight 5,2 t, optional 5,6 t / 5,8 t

6-speed-transmission with rear drive, optional converter transmission

emission standard EURO VI e

Trailer load: up to 3,500 kg, depending on total towing weight and model

Anti-lock braking system (ABS), Traction control system (TCS), Electric Brake Variator (EBV)

Common-rail direct injection

Electrical adjustable and heated exterior mirrors with wide angle mirror

Electronic controlled VGT Turbocharger

Electronic immobilizer

Iveco comfort shock-cushioning seats for driver and passenger, adjustable in height, length and bent, with armrests

Fuel tank 90 l, Fuel filter heating

Ladder frame

Radio DAB+ in drivers cabine

Spare wheel

Disc brakes on front/rear axle

Stabilisers on front/rear axle

Cruise control

Urea tank 20 l

Reinforced eco-smart-alternator with 2640 W (12 V x 220 A)

Reinforced shock absorbers

Winter tyres: 195 / 75 R 16

Twin tyres on rear axle

Only Alcove:

Electric window lifter on driver's and passenger's side

Driver and passenger airbag, seat belt tightener

Rear axle with leaf suspension (semi-elliptical)

Central locking for driver and passenger door with remote control

Fog lights with static turning lights

Only Liner:

Rear axle liner with air suspension and function lift and lower

Aluminium rims front axle with track extension and wheel cover rear axle



Standard details may vary with special floor plans and special models. Images partly with optional equipment.

Mercedes 516 CDI EURO VI

MERCEDES 516 CDI EURO VI E

4 cylinder engine with 125 kW/170 HP
Torque 380 Nm at 1.600 to 2.400 rpm

Midi-Alcove 7200 RSLG und 7400 RSL

Wheelbase: 4325 mm, gross vehicle weight 5.5 t

6-speed manual transmission ECO gear

AdBlue® tank 22 l

Active break assistant

Anti-lock braking system (ABS)

Traction control system (TCS)

Exterior mirrors with heating and electric adjustable

Outside temperature display

Tyres: 205/75 R 16 with M+S profile

Electric window lifters with comfort function

Electronic Stability Program (ESP)

Driver and passenger airbag

Driving light assistant

Generator 14 V / 180 A

Seatbelt warning für driver- and co-driver seat

Comfort seats for driver and passenger, heated, with armrests

Fuel tank 71 l

Steering wheel adjustable in gradient and height

Lumbar support für driver and co-driver seat

Mercedes-Benz emergency call system

Management for malfunction

Radio preparation

Crosswind assistant

Power steering

Seat heating for driver's and co-driver's seat

Lane Departure

Vehicle battery 12 V / 92 Ah

Front axle load increased to 2100 kg

Paintwork „arctic white“

Heat-insulating glass

Central locking with remote control

Twin tyres on rear axle



Standard details may vary with special floor plans and special models.
Images partly with optional equipment.

Comfort in every detail as standard equipment

ASSEMBLY

Lowered frame in reinforced construction at vehicles with rear drive

Exterior light 12 V with safety switching (automatic switch off at engine start)

Wide entrance door with window, with two point locking and remote control

Double-floor design, height of double floor: 38.5 cm, heated storage rooms, accessible via outside flaps sideways

Double-glazed and tinted acrylic flipper-/sliding window Seitz D-Lux with comb-combination-blind in the living area

Electronic controlled double-tread with safety switching (automatic draw-in at engine start and closed entrance door), additional control lamp on the dashboard

Rear garage/garage door, size depending on model

Rear wall made of dimensionally stable GRP attached on the Alu-PU-foam-sandwich-panel

Woodfree, sturdy comb-false floor made of fibreglass-reinforced MonoPan panels

Modern motorhome styling

PVC flooring with decor "Royal Oak"

PU-foam isolation, 40 mm, with a high bulk density for best insulation value and absolutely no absorption of humidity

Side skirt made of GRP

Self-supporting, high-tensile and anti-rotting sandwich-design

Lower floor made of anti-rotting GRP-sandwich-panels

Midi-Liner:

Electric powered blind on the panorama-front pane with PU-isolation

Front moulding made of seamless, dimensionally stable GRP

Tinted panorama front pane

Lateral hard glass-sliding windows (driver's cab) in insulating glazing, tinted

Blinds in driver's cab



Standard details may vary with special floor plans and special models. Images partly with optional equipment.

Comfort in every detail as standard equipment

PAINTING

Midi-Alcove: Paintwork alcove on drivers cab and coachwork in white, sills and rear bumper in black, front bumper bar, wheel arches and mirrors in black

Midi-Liner: Paintwork liner coachwork in white, sills, front and rear bumper bar and wheel arches in black, mirrors in black

LIVING AREA

Wardrobe in full ceiling-height (not in 6600 RSL) with inside mirror and lighting

Cushion in fabrics or Microfibre Denver and harmonised curtains

Spatial separation between sleeping and living area through a sliding door (depends on the floor plan)

Seitz Midi-HEKI above seating area

High-quality, ergonomically designed luxury cushion

Walls and ceiling covered with breathable lining material

Living space table with resistant laminate-surface

Liner:

L-shaped bench on driver's side with 3-point-belt system in driving direction

Alcove:

Rear bench seat with 3-point-belt system in driving direction

SLEEPING AREA

Homely light through single switching of the LED-reading lamps

INTERA – the innovative mattress-cover fabric together with Viscoline, the visco-elastic foam material, establish ideal conditions for a recreative sleep



Standard details may vary with special floor plans and special models. Images partly with optional equipment.

Comfort in every detail as standard equipment

KITCHEN

Double-glazed, tinted flipper window Seitz D-Lux and comb-combination-blind

Rear wall in the kitchen with mineral granite

Large storage lockers with removable bottom

Kitchen worktop in high quality and elegant granite solid surface

Fridge 100 l incl. 9 l freezer, absorber, irrespective of position, with AES, with LED lighting, 12V / 230 V or gas operation mode

Several drawers with metal separators, cutlery drawer, bin (depends on the model)

Thermostat-controlled roof exhauster (exhaust air/inlet air switchable) above kitchen

Sunk in stainless-steel sink with chromed one-handle-household-mixer tap

Sunk in Spinflo-gas stove, with three burners, combusive automatic, glass cover and splash guard

BATHROOM

230 V socket

Shelf for shower utensil with chrome rail and removable towel rack

Arrangeable roof exhauster with combination blind in the shower

Bathroom ambience in "Erbachahorn" decor

Bath door with massive, rounded metal handle and lock

Lighting with several LED spot lamps

Double-glazed, tinted bathroom window, Seitz D-Lux and comb-combination-blind

Corner rack in bathroom with Mineralgranit

One-handle-household-mixer tap on the basin

Integral toilet with flush (Thetford) with removable cassette

Large washbasin floor unit

Separate shower cubicle made of sanitary-acryl with acryl glass door

Mirror cabinet and open racks with chrome rail

Splash water protected lighting in the shower

Toilet paper holder, liquid soap dispenser, towel hook, towel rail, toilet brush and bathrobe hook

Washstand in high-strength granite solid surface with seamless moulded-in washbasin

Mirror on bath door



Standard details may vary with special floor plans and special models. Images partly with optional equipment.

Comfort in every detail as standard equipment

ELECTRICITY

1 x 120 Ah gel battery with 25 A charger

230 V FI earth leakage circuit breaker

Automatic charging of 12 V starter battery from 230 V external power source

Automatic charging of auxiliary battery while driving

Digital control panel with percental display of water/waste water-capacities, display of the current power consumption and display of the available energy reserves in percent

Automatic charging with electronic control and temperature monitoring

Living and sleeping room with energy-saving LED-lighting, LED-reading lamps separately switchable

WATER

Waste water drain hose with bayonet connector (storage outside of vehicle)

Automatic and electronic controlled water heating system

Automatic, central pressure water pump

Fresh water tank 230 l, in driving position 115 l and waste water tank 115 l, in the heated false floor

HEATING AND GAS INSTALLATION

Hot water central heating ALDE with convectors in living area, bathroom and intermediate floor, with integrated night setback

Additional electric heating cartridges 230 V, max. 3000 Watt

Gas bottle compartment for 2 x 11 kg gas bottles

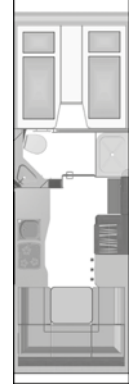
Comfort Duomatic L Plus with remote indication and control knob for determining the operating bottle, with IceEx and crash sensor



Standard details may vary with special floor plans and special models. Images partly with optional equipment.

Technical specifications, measures, weights and prices

IVECO



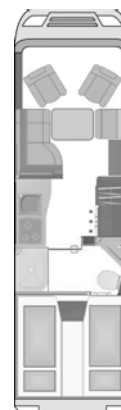
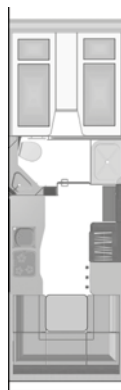
Iveco Daily Midi-Alkove

	50 C 16 6600 RSL	50 C 16 7200 RSLG	50 C 16 7400 RSL
Wheelbase	4.100	4.350	4.350
Length	7.050	7.650	7.850
Width	2.350	2.350	2.350
Height ¹⁾	3.350	3.350	3.350
Maximum total weight	5.200	5.200	5.200
Kerb weight	4.050	4.270	4.330
Payload	1.150	930	870
Three-point safety belts/lap straps ²⁾	4	4	4
Number of berths	2-4	2-4	2-4
Seating area	2.200 x 1.460	2.200 x 1.760	2.200 x 1.660
Refrigerator ³⁾	100	100	100
Front bed or over cab area bed	2 x 2.000 x 820	2 x 2.000 x 820	2 x 2.000 x 820
Rear bed	-	-	-
Large storage compartment (WxHxL)	820 x 1.180 x 2.200	1.030 x 1.180 x 2.200	930 x 1.180 x 2.200
Door to large storage compartment on right front-passenger side (WxH)	750 x 1.300	900 x 1.300	900 x 1.300
Door to large storage compartment on left driver's side (WxH)	350 x 1.200	650 x 650	650 x 650
Price model 2023 incl. 19 % tax	176.200,-	179.600,-	183.300,-

*) Weights and payload according to regulation (EU) Nr. 1230/2012 in standard equipment incl. driver, diesel fuel, fresh water and gas, power cable, without accessories **) Payload in this catalogue is the difference between total mass and mass in ready to start condition. ***) At measures of garage restrictions founded from back-lowering, covers, safety frame or something else is possible. ****) Q-models only in combination with stylX-luxury 1) Height measured with HEKI skylight, without optional equipment. 2) Additional persons admission on request. 3) Fridge 118 l or 195 l possible for an additional charge and depends on the model. The stated prices are for vehicles with standard equipment incl. the stated value added tax. The indications of measurements and weight are approximate, variations in weight and measurements of +/- 5 % are possible.

Technical specifications, measures, weights and prices

IVECO



Mercedes Midi-Alkove

Iveco Daily Midi-Liner

	516 CDI 7200 RSLG	516 CDI 7400 RSL	50 C 16 7400 RSL	50 C 16 7700 L	50 C 16 7700 RSL
Wheelbase	4.325	4.325	4.100	4.100	4.350
Length	7.700	7.900	7.550	7.850	7.850
Width	2.350	2.350	2.350	2.350	2.350
Height ¹⁾	3.400	3.400	3.300	3.300	3.300
Maximum total weight	5.500	5.500	5.200	5.200	5.200
Kerb weight	4.080	4.140	4.280	4.400	4.400
Payload	1.420	1.360	920	800	800
Three-point safety belts/lap straps ²⁾	4	4	4	4	4
Number of berths	2-4	2-4	2-4	2-5	2-4
Seating area	2.200 x 1.760	2.200 x 1.660	2.200 x 1.660	2.200 x 1.350	2.200 x 1.660
Refrigerator ³⁾	100	100	100	100	100
Front bed or over cab area bed	2 x 2.000 x 820	2 x 2.000 x 820	2 x 2.000 x 820	optional	2 x 2.000 x 820
Rear bed	—	—	—	2 x 2.000 x 820	—
Large storage compartment (WxHxL)	1.030 x 1.180 x 2.200	930 x 1.180 x 2.200	930 x 1.180 x 2.200	1.450 x 1.330 x 2.200	930 x 1.180 x 2.200
Door to large storage compartment on right front-passenger side (WxH)	900 x 1.300	900 x 1.300	900 x 1.300	1.300 x 1.300	900 x 1.300
Door to large storage compartment on left driver's side (WxH)	650 x 650	650 x 650	650 x 650	900 x 700	650 x 650
Price model 2023 incl. 19 % tax	183.600,-	187.300,-	222.400,-	225.900,-	225.900,-

*) Weights and payload according to regulation (EU) Nr. 1230/2012 in standard equipment incl. driver, diesel fuel, fresh water and gas, power cable, without accessories **) Payload in this catalogue is the difference between total mass and mass in ready to start condition. ***) At measures of garage restrictions founded from back-lowering, covers, safety frame or something else is possible. ****) Q-models only in combination with stylX-luxury
1) Height measured with HEKI skylight, without optional equipment. 2) Additional persons admission on request. 3) Fridge 118 l or 195 l possible for an additional charge and depends on the model.

The stated prices are for vehicles with standard equipment incl. the stated value added tax. The indications of measurements and weight are approximate, variations in weight and measurements of +/- 5 % are possible.

Accessories in a class of its own

IVECO

IVECO DAILY ALKOVE AND LINER

		Weight	EUR incl. 19% VAT
26327	Chassis Package Iveco Daily consisting of: Motor 3,0 l with 207 HP instead of 156 HP Trailer connection socket 12 V, 13-pin Gross vehicle weight 5,6 t instead of 5,2 t Fuel tank 170 l instead of 90 l Differential lock Air conditioning drivers cabine	95	11.930,-
20107	Trailer connection socket 12V, 13-pin (refitting considerably higher priced)	2	270,-
26319	Chassis load Iveco Daily from 5,200 kg to 5,600 kg gross vehicle weight		1.360,-
26474	Chassis load Iveco Daily from 5,200 kg to 5,800 kg gross vehicle weight, only in combination with 26142		1.840,-
26255	Motor with 176 HP with EURO VI e instead of 156 HP		3.920,-
26340	Motor with 207 HP with EURO VI e instead of 156 HP, only in combination with 26286		5.890,-
150001	Commitment charge (incl. vehicle registration certificate, full diesel fuel tank, Add blue tank)		770,-
26070	Diesel fuel tank 170 l for Iveco Daily	75	2.540,-
20072	Differential lock	10	1.560,-
26501	Spacing washer for 50 C rear-axle, each side 50 mm	8	1.160,-
131245	Double-DIN DAB+ radio Hi-Connect without navigation system, with TWIN rear view camera (color); incl. multi-function steering wheel	2	5.500,-
131246	Double-DIN DAB+ radio Hi-Connect with navigation system, with TWIN rear view camera (color); navigation for europe (europe, turkey, russia), incl. multi-function steering wheel	2	5.770,-
26294	Air conditioning drivers cabine with increased-output compressor (170 cm ³), tinted cab windows	15	3.200,-
26494	Steering wheel adjustable in height and grade		280,-
26286	Automatic converter transmission with 8 steps	20	6.850,-
20016	Two manual rear brackets for vehicles with GRP-rear mask	10	680,-
Only for Alcove:			
26142	Set of aluminium rims bi-color Iveco Daily silver with track extension front axle 235/75 R 16 tires and wheel cover rear axle 195/75 R 16 tires		3.860,-
130960	Trailer coupling for Iveco Daily Alcove completely installed for vehicles with rear mask; with ball and 12V/13-pin	50	2.540,-
26568	Driving safety package consisting of: electric parking brake, emergency brake assistant (AEBS) + adaptive cruise control (ACC), active lane departure warning, ESP with cross-wind assistant, traction plus with hill descent aid, active tire control system, multi-function steering wheel in leather		10.450,-
20063	Air suspension on rear axle	25	6.480,-
26497	Full-LED passing light and driving light with LED daytime running light		2.680,-



Installation of the above-mentioned accessories will increase the weight of the unloaded production vehicle and decrease the possible payload. Images partly with optional equipment.

Accessories in a class of its own

		Weight	EUR incl. 19% VAT
Only for Liner:			
130319	Trailer coupling for Iveco Daily Liner completely installed for vehicles with GRP rear mask; with ball and 12V/13-pin	50	2.540,-
26473	Chassis Package 2 Iveco Daily Liner consisting of: Motor 3,0 l with 210 HP instead of 156 HP Trailer connection socket 12 V, 13-pin Gross vehicle weight 5,8 t instead of 5,2 t full air suspension with autolevel Fuel tank 170 l instead of 90 l Differential lock Air conditioning drivers cabine with increased-output compressor (170 cm ²)	95	17.680,-
28096	Drivers- and co-drivers seat as air shock-cushioning seat "luxury-variant", cushions in drapery, (seat heating, wide arm-rest, lumbar vertebra support)		3.110,-
28099	Drivers- and co-drivers seat as air shock-cushioning seat "luxury-variant", cushions in leather, (seat heating, wide arm-rest, lumbar vertebra support, only with item number 260192)		3.110,-
28097	Chassis Iveco Daily Liner with full air suspension (front and rear axle)		6.850,-
130915	Blinds for front shield, manual operation from bottom up for Midi-/MaXi-Liner	10	950,-

MERCEDES

19279	Storage place for smartphones incl. wireless charging	2	310,-
19282	Active distance assist DISTRONIC, only in combination with MBUX and 7G-tronic plus		1.770,-
19294	Active lane departure		920,-
19264	Exit illuminated		130,-
19235	Commitment charge (incl. vehicle registration certificate, full diesel fuel tank, Add-Blue-tank)		770,-
19276	Hill starting aid (serie with automatic)		200,-
19283	Cupholder in front and storage bin with cover	2	280,-
19284	Digital EG-tachograph		490,-
19285	Digital radio (DAB/DAB+) only with MBUX		410,-
19227	Electrical preparation for trailer connection socket 13-pin	2	480,-
19286	Drivers- and co-drivers seat electric adjustable with memory function	37	4.160,-
19301	Drivers cabine/front bumper face bar/bumper guard painted in metallic, selectable colors obsidianblack or tenoritgrey		3.140,-
19302	Rear camera with display on inside mirror		1.560,-



Installation of the above-mentioned accessories will increase the weight of the unloaded production vehicle and decrease the possible payload. Images partly with optional equipment.

Accessories in a class of its own

MERCEDES		Weight	EUR incl. 19% VAT
19305	4-cylinder motor with 140 kw / 190 HP and 440 Nm full load instead of 4-cylinder motor with 120 kw / 163 HP		7.190,-
19306	Automatic 9-G-Tronic-speed transmission		4.500,-
19309	All-wheel drive 4x4 with Torque-on-Demand (only in conjunction with 190 hp and automatic)		11.850,-
19295	Generator 14 V / 250 A	7	1.490,-
19287	Air conditioning automatic THERMOTRONIC	18	4.660,-
19263	Comfort top-rack (incl. 2 reading lamps and spectacle case)		200,-
19296	Comfort head cushion for driver and co-driver		250,-
19288	Diesel fuel tank 93 l	19	590,-
19253	radiator grill chromed		480,-
19289	LED high-performance head lamp	2	3.240,-
19290	MBUX multimediasystem incl. hard disk navigation, 10,25"-touchscreen and multi-funktion steering wheel, connection of rear view camera possible	6	3.540,-
19237	Reinforced cross member with ball trailer coupling; trailer load unbraked 450 kg, braked max. 2000 kg, considering the gross combination weight of 7.000 kg	50	2.550,-
19291	Rain sensor in combination with wiper system for optimized cleaning		240,-
19226	Spare wheel instead of repair kit (loosely enclosed)	25	270,-
19251	Mud trap front	1	100,-
19298	Drivers- and co-drivers seat as shock-cushioning seat "comfort-variant" (not with electric adjustable seats)	34	1.380,-
19261	Thorax-Pelvis sidebag for driver and co-driver	2	1.040,-
19240	Heat insulation drivers cab		240,-
19268	Warm water central heating	7	1.750,-
19292	Window bag for driver and co-driver	7	1.530,-

ASSEMBLY

130625	Alcove raising, approx. 13 cm including roof rack	10	2.970,-
130987	Outside awning, 4.5 m, with integrated 230 V-motor and LED-Strip; colour grey	43	2.540,-
120992	Outside awning, 5.0 m, with integrated 230 V-motor and LED-Strip; colour grey not for 6600/7100 RSL	49	2.860,-
130697	Garage door 70 x 75 cm (W x H) on driver's side instead of 65 x 65 cm (W x H)		340,-



Installation of the above-mentioned accessoires will increase the weight of the unloaded production vehicle and decrease the possible payload. Images partly with optional equipment.

Accessories in a class of its own

		Weight	EUR incl. 19% VAT
131122	Garage door 75 x 130 cm on driver's side instead of 65 x 65 cm (not for 6600 RSL)	10	410,-
130591	Set of lift brackets with 4 brackets for Iveco Daily, with automatic levelling	150	10.730,-
131188	Panorama roof-light (HEKI 3) instead of Midi-HEKI for Midi-class	10	1.160,-
130329	Seitz-Midi-HEKI roof-light instead of skylight for alcove or rear bed	10	750,-
130715	Strap-securing system for large storage compartment, completely installed with straps	2	500,-

GAS / WATER

150211	Flush connection via filler for cesspit (as at fresh water)	1	270,-
120831	230 l septic tank instead of standard septic tank 115 l (Midi-class)	17	250,-
130026	Outside shower	2	390,-
130898	City outside water connection with pressure reducer (without Gardena-quick connector and hose)	2	460,-
130171	Additional fresh-water tank (115 l)* incl. plug (no plug in RSL-models)	132	750,-
130025	Outside gas socket	1	260,-
130024	Gas baking oven luxury style (instead of crockery shelf) with grill, highisolating glassdoor	23	1.320,-
150137	Heating circuit in rear bed area, switchable with three-way valve and bypass	1	530,-
130103	Ceramic toilet with fixed tank (115 l)*	30	2.390,-
131008	Motor heat exchanger for hot water heating and circulation pump for engine pre-heater	2	1.320,-
120156	Separate ventilation for cesspit via roof	1	260,-
130854	Thetford toilet C-260 with ceramic pottery bowl instead of standard toilet		760,-
130060	Additional toilet ventilation (SOG) via roof (not for fixed-tank toilet)	1	490,-
130027	Second slide-in toilet cassette, with holder	5	280,-



* Number and size of additional fresh water, waste water and lavatory tanks depends on the particular specification of the vehicle. Installation of the above-mentioned accessories will increase the weight of the unloaded production vehicle and decrease the possible payload. Images partly with optional equipment.

Accessories in a class of its own

ELECTRICITY		Weight	EUR incl. 19% VAT
131293	Additional charge for absorber fridge 177 l incl. sep. 35 l freezer instead of 100 l, with AES for automatic energy selection; mounting option is model-specific	10	1.450,-
130814	Roof air conditioning Aventa Comfort, cooling capacity 2.400 watt	34	2.890,-
130583	Dishwasher in kitchenette for 4 place settings, front decor in silver	20	1.610,-
130277	Compressor fridge 118 l incl. sep. 17 l freezer instead of 100 l, 12 V-mode, energy-efficiency class A-plus; (power consumption approx. 280 W/24 hrs. at ambient temperature of 32°C)	6	550,-
130278	Compressor fridge 195 l incl. sep. 44 l freezer instead of 100 l, 12 V-mode, energy-efficiency class A plus (power consumption approx. 320 W/24 hrs. at ambient temperature of 32°C), mounting option is model-specific	10	1.120,-
131235	Midi-Electric-Power-Package with battery 210 AH (instead of 120 AH), with converter 12V/230V Sinus AC voltage, continuous output 1600 VA / 1300 W and remote control, plus 5 additional plug sockets (3 x 230 V, 2 x double-USB)	49	3.150,-
130737	Microwave without grill, 230 V-mode, installed in the wall cupboard above the kitchenette	8	1.590,-
130088	Radio for living area	1	680,-
130808	Solar plant 165 W incl. solar charge controller	20	2.140,-
130809	Solar plant 2 x 165 W incl. solar charge controller	38	3.620,-
131239	Full-automatic TWIN-TV/satellite unit Oyster V 85 with 24" TFT-tv (receiver integrated) in entrance area or at sideboard, tv-preparation in sleeping room (12 V, antenna)	38	7.480,-
131242	Cytrac DX instead of Oyster V85, this article only in combination with full-automatic TWIN-TV/satellite unit		



* Recommended accessories 1) recommendation solar plant 2) When using inverters, please note the battery capacity, disturbance can occur at sensitive consumer load. Installation of the above-mentioned accessories will increase the weight of the unloaded production vehicle and decrease the possible payload. Images partly with optional equipment.

Accessories interior design

STYLX-FANTASY

		Weight	EUR incl. 19% VAT
131223	StylX fantasy marble (= bright)	20	5.100,-
131224	StylX fantasy amber (= brown)	20	5.100,-
131225	StylX fantasy slate (= grey)	20	5.100,-
Choice of the fronts in combination with stylX-fantasy:			
131221	Fronts in Bergahorn highgloss		
131222	Fronts in highgloss white		
Mineral granite for kitchen worktop, sink (stainless steel ground) with cover, kitchen rear wall			
	- marble		
	- amber		
	- cliff		
Ceiling canopy in leather with integrated LED-light			
	- colour bright		
Optional Carpet chained (removable)			
	- colour grey-brown		
Microfiber wallcovering			
High-class and massive water-tap in bathroom and kitchen			
Make up mirror in bathroom with LED individual light			
Nightlight with LED-point-light			

OPTIONS IN COMBINATION WITH STYLX-FANTASY

131201	Cabinet body decor "stone-oak" in combination with wall unit covers high gloss white or Bergahorn, only with stylX-fantasy	2.070,-
131290	Cabinet body decor "Tiberino-nut" in combination with wall unit covers high gloss white or Bergahorn, only with stylX-fantasy	2.070,-



Installation of the above-mentioned accessories will increase the weight of the unloaded production vehicle and decrease the possible payload. Images partly with optional equipment.

Accessories interior design

ACCESSORIES STYLX		Weight	EUR incl. 19% VAT
131190	Canopy for Heki 3 with 4 LED spot lamps and dimmer	4	670,-
130875	Canopy for Midi Heki with 4 LED spot lamps and dimmer	4	600,-
130876	Canopy for Mini Heki with 2 LED spot lamps	2	500,-
131070	Half-light package stylX fantasy (front and rear area, indirect illumination of lamps in corners)	3	1.640,-
130832	Electrically lowerable coffee shelf inkl. Socket (230 V) and coffee maker, only with cabinet of glasses, not for 6600 RSL	2	680,-
131154	Glass-fronted cabinet in the kitchen (for lowerable coffee-board, not for 6600 RSL	5	390,-
131064	Glass-fronted cabinet with TFT section instead of wardrobe, with 2 matching shelves and 8 glasses	6	1.160,-
130908	Folding bed, size approx. 1200 x 2000 mm, for Iveco Daily	85	2.870,-
131004	Additional charge for extendible folding bed (width 1400 mm)	10	490,-
121056	Wardrobe 400 cm wide and refrigerator tall cabinet and small sideboard instead of wardrobe 600 with fridge under the sideboard.	15	1.300,-
130644	LED light strip in glass cabinet (small), illumination in blue		100,-
130855	Drawer under the bench/in the socle of the RS-table	5	320,-
120598	Sliding doors in opposite direction between bathroom and rear bed	20	1.440,-
131247	Table lowerable with table cushion for modification to a bed	10	560,-
131243	Living comfort package consisting of: - motor heat exchanger and motor pre heat pump - living room carpet - canopy for Midi-HEKI - lowerable table	45	2.740,-
120838	Carpet chained, removable	10	680,-

CUSHION / CURTAIN / ROLLER BLIND

130807	BICOLOR with leather/drapery-combination: upper and lower ridge in drapery, back and seat in leather	3.010,-
130806	BICOLOR with leather/drapery-combination: upper and lower ridge in leather, back and seat in drapery	2.450,-
130618	BICOLOR with leather cushion	210,-
260192	Cushion in very high-quality leather	4.470,-
165597	Roman blinds	570,-
165598	Roman blinds with continuous line	1.150,-



Installation of the above-mentioned accessories will increase the weight of the unloaded production vehicle and decrease the possible payload. Images partly with optional equipment.

The fine print

Accessories and original parts for PhoeniX-motorhomes offered by Schell Fahrzeugbau GmbH have been specifically developed and tested. Any change of the factory-provided status not approved by Schell Fahrzeugbau GmbH may lead to a spoiling of warranty, density warranty, driving and transport safety.

The indications of measurements and weight are approximate, variations in weight and measurements of +/-5% are possible. The stated weights and payload are calculated according to regulation (EU) Nr. 1230/2012 in standard equipment incl. driver, diesel fuel, fresh water, gas, power cable, without accessories and without passenger car. The water supply installation at least corresponds to state of the art 03/2009 (Directive 2002/72/EG)

The stated payload of PhoeniX-motor homes will decrease with the installation of accessories and optional equipment. The installation of extra equipment, additional water tanks and their charging may change the axle load. The loading of the vehicle and the compliance with the gross axle weight rating respectively the permissible maximum weight has to be checked and to be considered before driving. Special floor plans and special editions may vary from the weight specifications and technical data.

All prices for vehicles, optional equipment and accessories are valid until the next edition of this price list and are quoted in € included VAT. All prices are recommended retail prices ex works. The prices for optional equipment and accessories are only valid with factory-provided installation and duly disposal.

Reorders in a period of 12 weeks before the agreed delivery date require an agreement of the delivery possibilities.

Reorders within 12 weeks before the agreed delivery date may cause additional charges.

Technical changes, misprints and errors expected!

Driving licence C/CE for motor homes above 7,5 t

Nationwide there are many driving schools, where you can get a driving licence straightforward and quickly in weekly courses. Often they also offer holiday courses. The success rate of the passed tests is 94%.

Driving licence class C

With this licence you are allowed to drive motor homes (and lorries) above 7,5 t gross vehicle weight and a trailer up to 750 kg gross weight.

The training for the class C licence normally lasts one week at many driving schools. The course includes a theoretical and a practical part, each with a test. The theory rotates with the driving. The charges are ca. 1.800 € plus separate fees for public authorities.

Driving licence class CE

With this licence you are allowed to drive motor homes (and lorries) above 7,5 t gross vehicle weight and a trailer above 750 kg gross weight (up to 40 t gross vehicle mass). The training for the class CE licence normally also lasts one week, but there are made higher demands than in class C. The charges are ca. 2.400 € plus separate fees for public authorities.

You need the following documents:

- 1 passport photograph
- Ophthalmologic attestation
- Medical certificate
- First aid course (2 x 8 hours for lorries)

With these documents you apply for one of the above-named driving licences at your appropriate Driving Licence Agency. As soon as you have the documents back, you may pass the test.

Many driving schools will gladly arrange a nearby motor home-site or a hotel room.

The translation was carried out as well as possible, but if there is still a difference between the translated version and the original German version, only the German version is legally valid. No liability is accepted for linguistic errors in this context. The customer is asked to also consult the German version.



Schell Fahrzeugbau GmbH · Phoenix-Reisemobile
Sandweg 1 · 96132 Aschbach
Tel. 095 55.92 29 - 0 · Fax 095 55.92 29 - 29
info@phoenix-reisemobile.de · www.phoenix-reisemobile.de